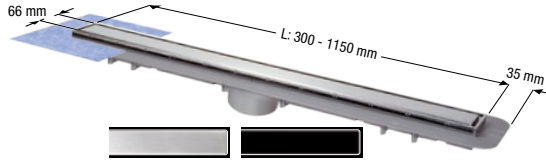


## Modular system 100

For body drains *Classic*, *The Superflat* and *Floordrain ME*

### Shower channel upper section with cover in stainless steel AISI 304



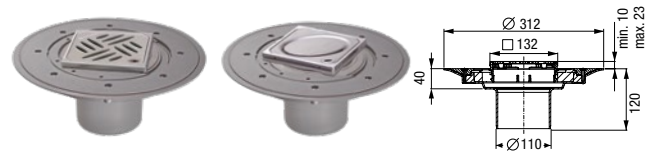
#### Linearis Compact

in stainless steel AISI 304

**Material:** ABS, rim in stainless steel  
**Class:** K 3  
**Cover:** Can be reversed and tiled on site  
**Sealing water height:** 50 mm  
**Drainage capacity:** 0.6 l/sec (10 mm threshold)  
**Inclusive:** Removable odour trap (remove from all drain bodies during installation), seeping water opening prepared, installation supports and waterproofing membrane

Channel length in mm	Art. no.
300	47 804S
450	47 805S
550	47 806S
650	47 807S
750	47 808S
850	47 809S
950	47 810S
1050	47 811S
1150	47 812S

### Variofix shallow bed upper sections with covers in stainless steel



#### with design cover Kessel / Oval

in stainless steel AISI 304

**Material:** ABS, rim in stainless steel  
**Class:** L 15  
**Tile thickness:** 8 – 21 mm  
**Cover:** 120×120 mm  
**Anti-slip class design cover Kessel:** R9 according to DIN 51130; C according to DIN 51097  
**Inclusive:** Waterproofing membrane

*Kessel* Art. no. 47 904  
*Oval* Art. no. 47 905

### Upper sections

with covers in stainless steel



#### with design covers

in stainless steel AISI 304

**Material:** ABS, rim in stainless steel  
**Class:** L 15 (*Kessel*, *Oval*) / K 3 (*Spot*, *Slot*)  
**Cover:** 120×120 mm  
**Anti-slip class design cover Kessel:** R9 according to DIN 51130; C according to DIN 51097

Cover	Art. no.	Cover	Art. no.
with <i>Lock &amp; Lift</i> System		without <i>Lock &amp; Lift</i> System	
1	AISI 304 27 201	1	AISI 304 27 225
2	AISI 304 27 202	2	AISI 304 27 226
3	AISI 304 27 221	3	AISI 304 27 220
4	AISI 304 27 219	4	AISI 304 27 218

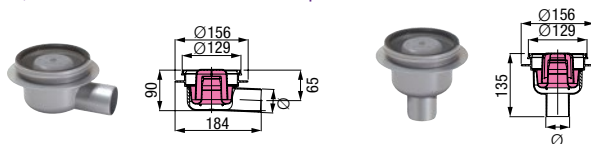
#### with slotted cover

in stainless steel AISI 304

**Material:** ABS, rim in stainless steel  
**Class:** K 3 / L 15  
**Cover:** 138×138 mm  
**Class K 3** Art. no. 27 196  
**Class L 15** Art. no. 27 176, anti-slip

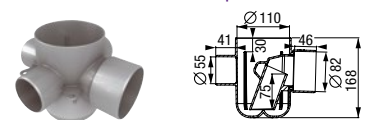
### Drain bodies *Classic* in ABS

with / without removable odour trap



### Drain body *Floordrain ME* in ABS

with removable odour trap



### Lateral outlet / Vertical outlet Ø 50 / Ø 75

Sealing water height: 50 mm

Drainage capacity: 0.8 l/sec with 20 mm threshold

#### with removable odour trap

Lateral outlet	Art. no.	Vertical outlet	Art. no.
Ø 50	40 150	Ø 50	40 250
Ø 75	40 170	Ø 75	40 270

#### without removable odour trap

Lateral outlet	Art. no.	Vertical outlet	Art. no.
Ø 50	40 151	Ø 50	40 251
Ø 75	40 171	Ø 75	40 271

### Three lateral inlets Ø 55, one lateral outlet Ø 82

Drainage capacity:

1.8 l/sec with 20 mm threshold

**Inclusive:** Glue connection

according to BS 5255.

DIN Push fit / DIN glue connection available as accessories (page 207)

Art. no. 37 3001