

# Lifting station *Aqualift S Compact Mono / Duo Tronic*

for installation in a concrete slab / floor



**CE** EN 12050-2

**Tank volume:** 65 liters  
**Pump volume:** 20 liters

### Polyethylene storage chamber

for installation in a concrete slab / floor,  
 installation depth (D) 490 to 620 mm,  
 with lateral inlet  $\varnothing$  110 mm.  
 Installation area 700 × 700 mm.

### Upper section and cover

Vertically and laterally adjustable upper section,  
 with black / recessed cover for on-site tiling,  
 integrated drain, made of polymer, load class K 3,  
 with moisture protective sealing flange.

### Pump

Single or twin removable *GTF* pump(s) for  
 wastewater without sewage, float switch /  
 air pressure sensor controlled with multi-vane  
 impeller, with integrated non-return flap,  
 pumping volume 20 liters (*GTF 500* / *GTF 1200*),  
 pressure pipe connection  $\varnothing$  40 mm.

### Control unit

Tronic versions with SDS control unit (self-diagnosis  
 system) for fully automatic pump control, splash  
 water protected (IP 54), wall mounted.

**Power cable length:** 5 m

**Note:** A ventilation pipe must be provided for on site.

**Accessories:** page 134 – 141



Illustration shows Art. no. 280 550X

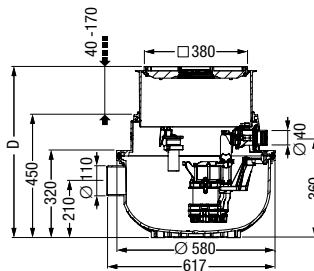
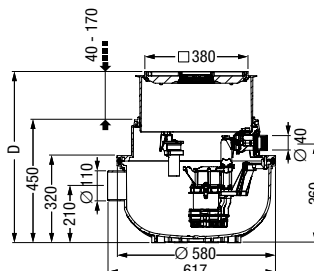


Illustration shows Art. no. 280 550XC



### Mono version with one pump

GTF pump	Voltage	Art. no.
With recessed cover for on-site tiling		
500-S1	230 V	280 550X
500-S1 resistant	230 V	280 550XC
1200-S1	230 V	281 250X
1200-S1 resistant	230 V	281 250XC

### With black cover

500-S1	230 V	280 550S
500-S1 resistant	230 V	280 550SC
1200-S1	230 V	281 250S
1200-S1 resistant	230 V	281 250SC

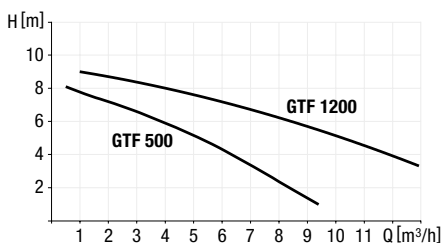
### Duo version with two pumps

GTF pump	Voltage	Art. no.
With recessed cover for on-site tiling		
500-S1	230 V	280 530X
500-S1 resistant	230 V	280 530XC
1200-S1	230 V	281 230X
1200-S1 resistant	230 V	281 230XC

### With black cover

500-S1	230 V	280 530S
500-S1 resistant	230 V	280 530SC
1200-S1	230 V	281 230S
1200-S1 resistant	230 V	281 230SC

### Pumping capacity



Pump type	Voltage	Amperage	Power P1/P2	RPM	Pumping height	Pumping capacity
GTF 500-S1*	230 V ~ 50 Hz	2.7 A	0.6 kW / 0.36 kW	2800 min <sup>-1</sup>	8 m	10 m <sup>3</sup> /h
GTF 500-S1 resistant*	230 V ~ 50 Hz	2.7 A	0.6 kW / 0.36 kW	2800 min <sup>-1</sup>	8 m	10 m <sup>3</sup> /h
GTF 1200-S1*	230 V ~ 50 Hz	6.2 A	1.4 kW / 0.84 kW	2650 min <sup>-1</sup>	9 m	15.5 m <sup>3</sup> /h
GTF 1200-S1 resistant*	230 V ~ 50 Hz	6.2 A	1.4 kW / 0.84 kW	2650 min <sup>-1</sup>	9 m	15.5 m <sup>3</sup> /h

\* Definition of S1-pump see page 101



Always the right choice:    
**kessel.com/smartselect**