

Lifting station *Minilift F*

The small version with the powerful macerator SharkTwister.

Compact and also suitable for black water: the *Minilift F* for free-standing set-up drains the toilet and other sanitary units in rooms below the backwater level or without sufficient slope to the next wastewater collecting pipe. The small lifting station chops faeces and toilet paper reliably with the powerful high-quality macerator SharkTwister.

Powerful macerator SharkTwister

The built-in stainless steel pump with the powerful high-quality macerator reliably chops faeces and toilet paper – thus providing maximum operational safety.

Intelligent control technology

The SharkTwister is controlled by intelligent control technology with an acoustic alarm function – without the need for a separate control unit.

Straightforward maintenance

The pump is integrated ready to plug in without the help of an electrician and can be removed for maintenance in no time at all.

Compact lifting station *Minilift F* for free-standing installation in frost protected rooms

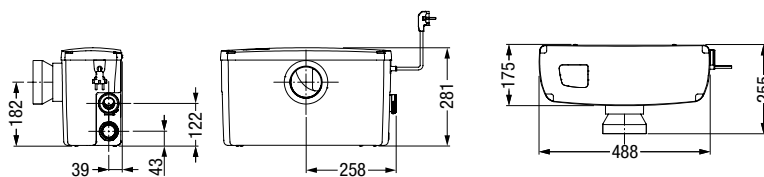
EN 12050-3

Plug-and-play sewage lifting station with macerator for wastewater disposal from a single toilet.

For free-standing set-up.

With pneumatic level control, with activated carbon filter, interior electronics separate from wastewater tank - easy, odour free maintenance

Power cable length: 1.6 m



Voltage	Art. no.
230 V	28 520

