

Upper section Ø 800

Made of polymer / stainless steel

Compatibility:

For use as upper section for the engineering system base *Ecolift XL Mono/Duo* for the version with minimum installation depth page 82

Version:

with / without waterproof flange

square, tileable,
without waterproof flange



Installation depth D
in mm (min./max.)

Covers

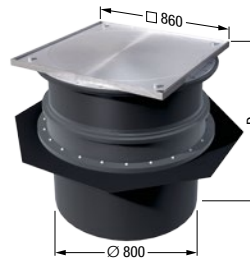
Art. no.

65 - 314

Class A/L 15

874 01 75

square, tileable,
with waterproof flange

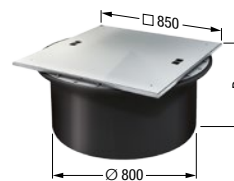


282 - 531

Class A/L 15

874 01 76

square, not tileable,
without waterproof flange

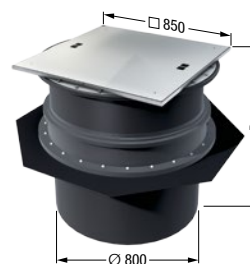


50 - 299

Class A/L 15

874 01 77

square, not tileable, anti-slip,
with waterproof flange

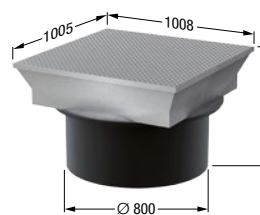


267 - 516

Class A/L 15

874 01 78

square, without waterproof
flange



274 - 523

Class B

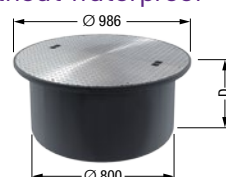
874 01 79

274 - 523

Class D

874 01 80

round, without waterproof
flange



65 - 314

Class K 3

874 01 81