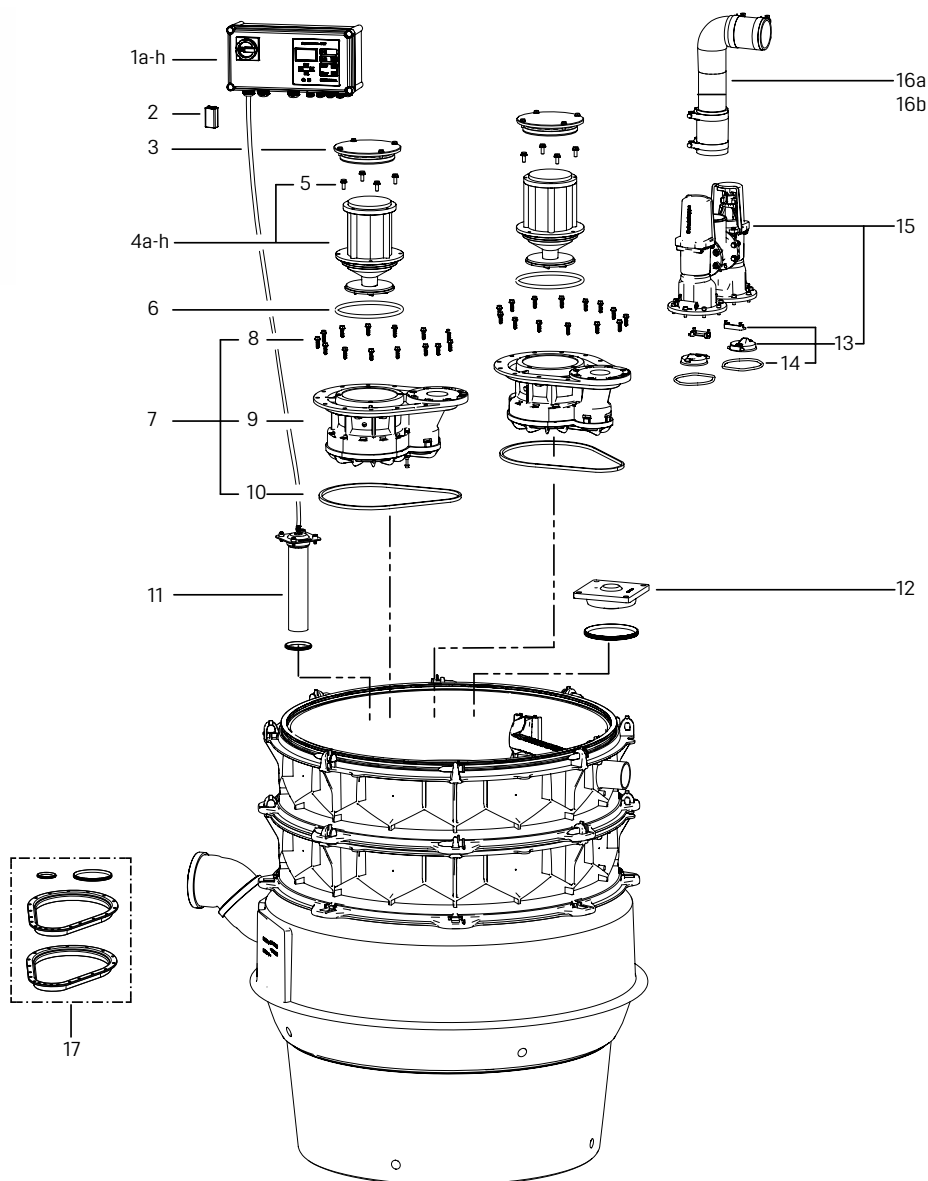


Pumping station *Aqualift F XL Mono/Duo*

in the engineering system base, Installation in the ground



Item	Designation	Art. no.	Item	Designation	Art. no.
1	Control unit		4g	SPF 4500, S3, 400 V, 10 m cable	680 533
1a	Comfort <i>Aqualift Mono</i> , 230 V	28 731	4h	SPF 4500 S1, 400 V, 10 m cable	680 534
1b	Comfort <i>Aqualift Duo</i> , 230 V	28 746	5	Screw set for pump	28 609
1c	Comfort <i>Aqualift Mono</i> , 400 V, 2.5 - 4.0 A, for SPF 1500	28 755	6	Flange seal for SPF 1400 - 4500	680 052
1d	Comfort <i>Aqualift Mono</i> , 400 V, 4.0 - 6.3 A, for SPF 3000	28 756	7	Replacement pump flange set, <i>Aqualift F</i>	28 051
1e	Comfort <i>Aqualift Duo</i> , 400 V, 2 × 2.5 - 4.0 A, for SPF 1500	28 757	8	Screw set, galvanised (14 ea.)	680 047
1f	Comfort <i>Aqualift Duo</i> , 400 V, 2 × 4.0 - 6.3 A, for SPF 3000	28 758	9	Pump flange for SPF 1400 - SPF 4500	680 050
1g	Comfort <i>Aqualift Mono</i> , 400 V, 6.3 - 10.0 A, for SPF 4500 and 5500	28 781	10	Pump flange seal <i>Aqualift F</i>	680 045
1h	Comfort <i>Aqualift Duo</i> , 400 V, 2 × 6.3 - 10.0 A, for SPF 4500 and 5500	28 783	11	Immersion pipe for XL engineering system base, 10 m hose	680 388
2	Battery, 9 V block	680 034	12	Cleaning cover, screwed, Ø 160	680 421
3	Cover for pump flange, Ø 220 mm, with O-ring	680 460	13	Flap set with seal Ø 125, flap and flap holder	680 053
4	Motor with impeller		14	Seal Ø 125	680 002
4a	SPF 1400 S3, 230 V, with capacitor, 10 m cable	680 218	15	Flap housing for Duo systems with two shut-off valves	680 419
4b	SPF 1400 S1, 230 V, with capacitor, with 10 m cable	680 219	16	Pressure pipes	
4c	SPF 1500 S3, 400 V, 10 m cable	680 098	16a	Ø 90, Length 387 mm	680 423
4d	SPF 1500 S1, 400 V, 10 m cable	680 445	16b	Ø 90, Length 426 mm	680 446
4e	SPF 3000 S3, 400 V, 10 m cable	680 221	17	Seal set for <i>Aqualift F</i> pumping station	680 422
4f	SPF 3000 S1, 400 V, 10 m cable	680 532			