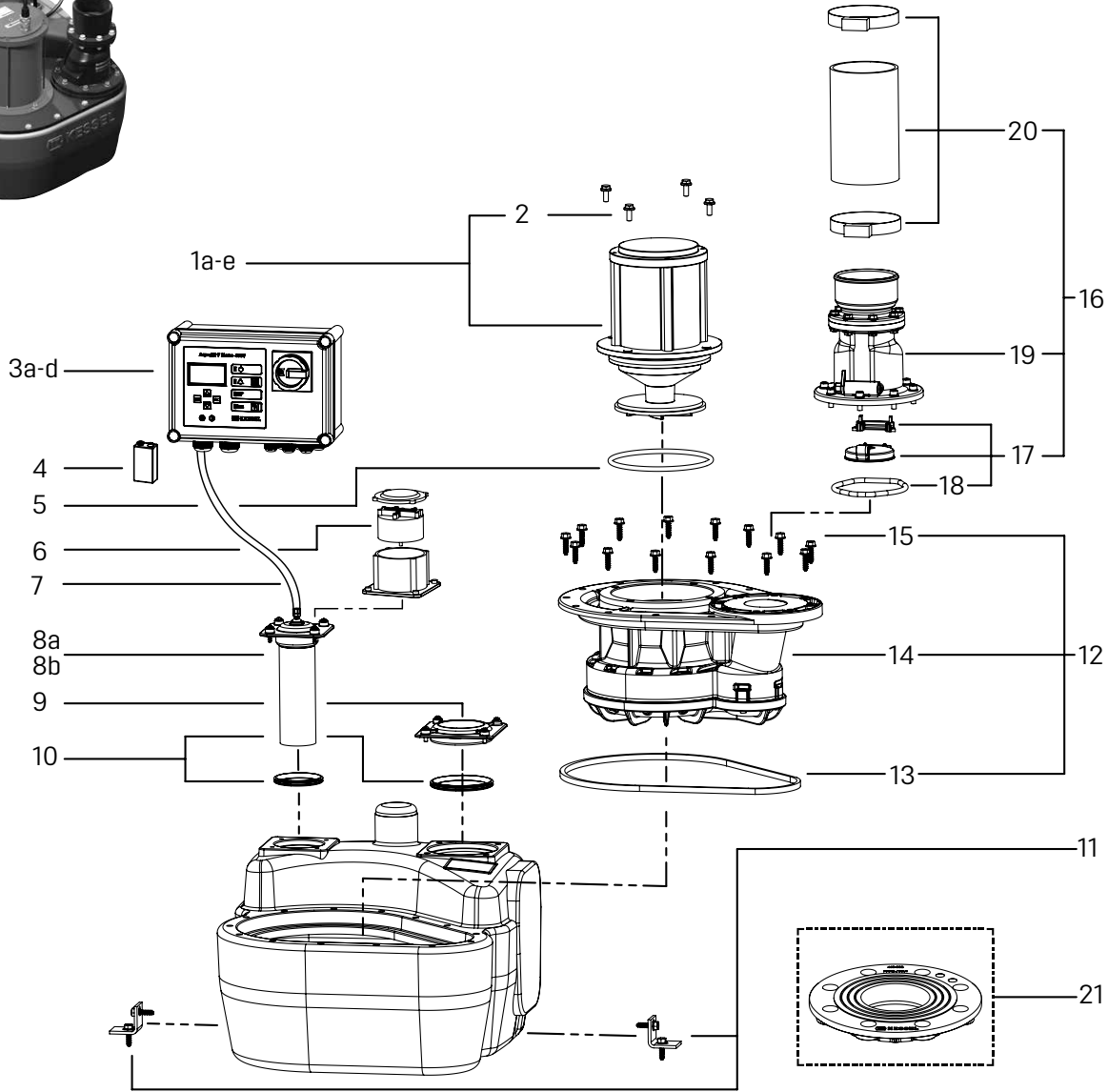


Lifting station *Aqualift F*

Free-standing installation, up to model year 03/2013



| Item | Designation | Art. no. |
|------|-----------------------------------------------------------------|----------|
| 1 | Motor with impeller | |
| 1a | SPF 1400, S1, 230 V, 5 m cable, without capacitor | 680 095 |
| 1b | SPF 1500, S3, 400 V, 5 m cable | 28 028 |
| 1c | SPF 3000, S3, 400 V, 5 m cable | 28 027 |
| 1d | SPF 1500, S3, 400 V, 10 m cable | 680 098 |
| 1e | SPF 3000, S3, 400 V, 10 m cable | 680 221 |
| 2 | Bolt set for pump | 28 609 |
| 3 | Control units* | |
| 3a | Comfort, <i>Aqualift Mono</i> , 2.5 – 4.0 A, 400 V for SPF 1500 | 28 755 |
| 3b | Comfort <i>Aqualift Mono</i> , 4.0 – 6.3 A, 400 V for SPF 3000 | 28 756 |
| 3c | Comfort <i>Aqualift Mono</i> , 230 V, without capacitor | 28 731 |
| 3d | Standard <i>Aqualift F Mono</i> , 230 V with capacitor | 680 062 |
| 4 | Battery, 9 V block | 680 034 |
| 5 | Flange seal for SPF 1400 – SPF 4500 | 680 052 |
| 6 | Pressure monitor, Mono, incl. seal | 28 045 |
| 7 | Pressure hose, 6 × 4 mm, 100 natural (sold by the metre) | 680 071 |

| Item | Designation | Art. no. |
|------|-----------------------------------------------------------------------|----------|
| 8 | Immersion pipe, <i>Aqualift F Mono</i> | |
| 8a | with 10 m cable, up to model year 12/2009 | 680 048 |
| 8b | with 5 m hose, beginning model year 01/2010 | 680 055 |
| 9 | Cleaning cover, screwed, 160 × 140 mm | 680 044 |
| 10 | Seal set for <i>Aqualift F</i> | 28 608 |
| 11 | Attachment bracket with screws (2 ea.) | 680 046 |
| 12 | Replacement pump flange set, <i>Aqualift F</i> | 28 051 |
| 13 | Pump flange seal, <i>Aqualift F</i> | 680 045 |
| 14 | Pump flange SPF 1400 – SPF 4500 | 680 050 |
| 15 | Screw set, galvanised (14 ea.) | 680 047 |
| 16 | Replacement pump housing set, <i>Aqualift F Mono</i> , Ø 110 | 28 676 |
| 17 | Flap set with rolling ring seal, flap and flap holder | 680 053 |
| 18 | Seal Ø 125 | 680 002 |
| 19 | Flap housing for Mono systems, without shut-off valve | 680 060 |
| 20 | Flexible coupling Ø 110, for pressure pipes made of PE, 2 hose clamps | 28 663 |
| 21 | Flange adapter Ø 80, for polymer fitting | 28 714 |

* For control units, see page 106