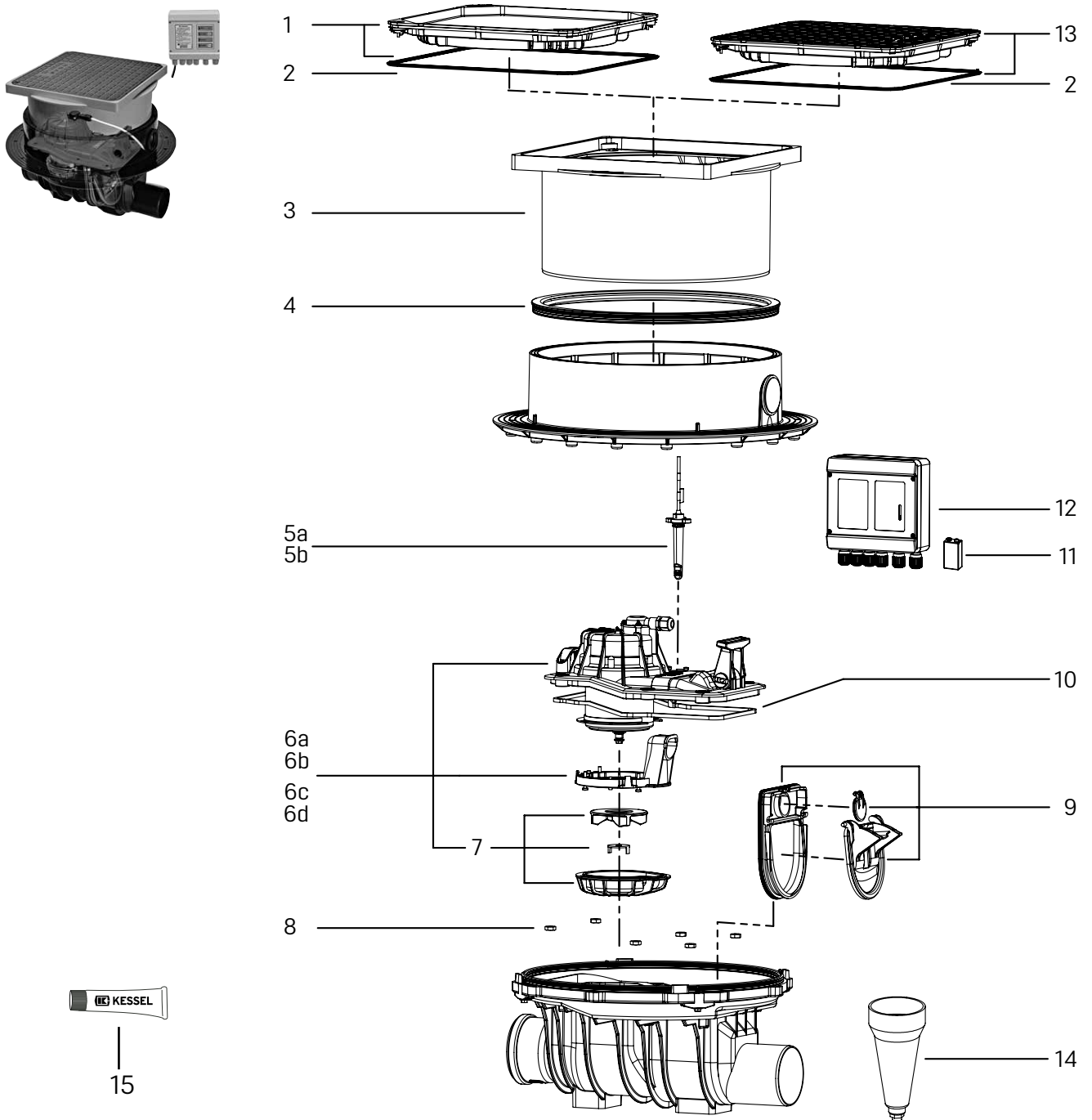


# Backwater pumping station *Pumpfix F*

Installation in the floor slab, up to model year 12/2010



Item	Designation	Art. no.	Item	Designation	Art. no.
1	Cover plate, tileable, surface water resistant, 384 × 384 mm with seal	83 052	6d	incl. motor, impeller, macerator, pump housing, 15 m cable, Ø 160	680 042
2	Seal for cover plate 384 × 384 mm	680 025	7	Pump housing lower section with macerator and impeller	680 043
3	Upper section, height-adjustable up to 180 mm	83 061	8	Hexagon nut set, M8, A/F17 (6 ea.)	680 132
4	Seal for upper section	680 150	9	Slide-in flap housing with backwater and non-return flap (3-piece)	680 038
5	Spare parts set, optical probe with 3 adapters		10	Seal for screwable lockable cover	70 202
5a	for Ø 110/125/160 with 5 m cable	80 888	11	Battery, 9 V block	680 034
5b	for Ø 110/125/160 with 15 m cable	80 988	12	Control unit <i>Pumpfix F</i> 230 V, up to model year 12/2010	28 070
6	Replacement pump, <i>Pumpfix F</i>		13	Cover plate, black, surface water resistant, 384 × 384 mm, with seal	83 050
6a	incl. motor, impeller, macerator, pump housing, 5 m cable, Ø 110/125	680 040	14	Test funnel with seal	70 214
6b	incl. motor, impeller, macerator, pump housing, 5 m cable, Ø 160	680 039	15	High-performance grease for backwater valves, 12 g	681 001
6c	incl. motor, impeller, macerator, pump housing, 15 m cable, Ø 110/125	680 041			