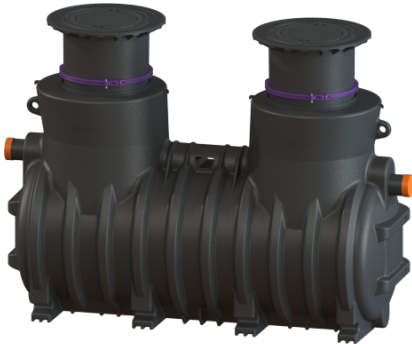


Grease separator EasyClean ground NS 10, Standard, 740-1175 mm, Class D



Article information

Item no.: 93010/120D
 GTIN: 4026092025802
 Price group: 60

Advantages

- Vertically adjustable upper section with odour-tight cover plates in various load classes
- Waterproof, resistant to aggressive wastewater
- Low-maintenance operation

Description

The separator for greasy wastewater is suitable for installation in the ground and comes without metallic components in the tank. The collecting tank made of permanently resistant polymer (PE) is equipped with an integrated sludge trap and has a rounded base for fast and clean disposal. Access for cleaning and maintenance work is possible via one or several service access covers.

Manual disposal is carried out with the tank open.

20 year polyethylene warranty.

Installation situation: underground installation

Version:

| | |
|---|--|
| Type of disposal: | manual with suction hose |
| Disposal variant: | Standard |
| Refill inlet in accordance with DIN 1988: | no |
| Nominal size (NS): | 10 |
| Inspection window: | no |
| Shredder-Mix-System: | no |
| SonicControl: | no |
| Load-bearing capacity (DIN 19901): | E4 |
| Note on installation depth: | Installation in the ground, frost-free depth 1200 mm |

Delivery state: Installation-ready (connection parts must be connected on site)

General characteristics:

| | |
|-----------|---------|
| Material: | PE |
| Standard: | EN 1825 |

Dimensions:

| | |
|-------------------------------|----------------|
| Max. length: | 3,062 mm |
| Required access area, length: | 2,910 mm |
| Required access area, width: | 1,200 mm |
| T-DSC: | 220 mm |
| DSC: | 700 - 1,500 mm |

Tank:

| | |
|--|---|
| Inlet nominal size (DN): | 150 |
| Inlet nominal size (OD): | 160 mm |
| Outlet nominal size (DN): | 150 |
| Outlet nominal size (OD): | 160 mm |
| Distance pipe bottom inlet to tank bottom: | 1,100 mm |
| Distance pipe bottom outlet to tank bottom: | 1,030 mm |
| Installation depth: | 740 - 1,175 mm |
| Groundwater resistant from lower edge of base section: | 1,320 mm |
| Clear width of entry (LW): | 600 mm |
| Chamber system: | Cistern |
| Connection inlet/outlet sockets: | PE-HD pipes in accordance with DIN 19537, PVC-KG pipes in accordance with DIN 19534, PP or AS |
| Vertical adjustment: | vertically adjustable upper section, can be tilted by 5 degrees |

Coverage features:

| | |
|------------------|---|
| Type of cover: | Cover plate |
| Cover material: | Grey iron |
| Colour of cover: | black |
| Load class: | D 400 (EN 124) |
| Height: | 121 mm |
| Tightness: | odour-tight and surface water resistant |
| Locking: | locked |

Wastewater contents:

| | |
|---------------------|---------|
| Separator contents: | 1,600 l |
| Total volume: | 2,600 l |

Contents of sludge trap: 1,000 l
Storage quantity of grease: 400 l

Control:

Control unit: no