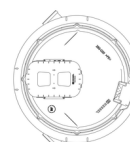
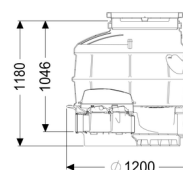


Backwater chamber LW 1000 Inlet DN 150, Outlet DN 150, 1180 mm



Article information

Item no.: 881005-DN150

GTIN: 4026092071717

Price group: 60

Advantages

- Komfort: expensive living or useful space is not lost
- No system noises or unpleasant odours and soiling in the building
- Simple installation thanks to low weight of the chamber components
- Simple conversion to Staufix SWA, Staufix FKA or Pumpfix F

Description

The backwater chamber with monolithic structure is equipped with access steps, three inlets, an open channel passage and an integrated Controllfix clean out.

Thanks to the modular KESSEL system, the clean out can easily be converted to a Staufix SWA Premium backwater valve, Staufix FKA or Pumpfix F backwater pumping station.

The temporary protective cover made of polymer can be used as a cover in the green area or be replaced by an optional upper section with cover plate in accordance with EN 124. The optional upper section makes a variable installation depth possible.

Watertight – suitable for aggressive wastewater – 20-year warranty for the system tank.

Type of wastewater:

wastewater with sewage

Delivery state:

Installation-ready (connection parts must be connected on site)

General characteristics:

Colour: grey

Approval: Z-42.1-333

Tank:

Number of inlets: 3 ST

Inlet nominal size (DN): 150

Number of outlets: 1 ST

Outlet nominal size (DN): 150

Distance pipe bottom inlet to tank bottom: 136 mm

Distance pipe bottom outlet to tank bottom: 108 mm

Tank width max.: 1,250 mm

Installation depth: 1,230 - 1,460 mm

Channel: open channel passage, with inlets right and left, 45 degrees

Groundwater resistant from lower edge of base section: 2,000 mm

Clear width of tank (LW): 1,000 mm

Clear width of entry (LW): 600 mm

Chamber height: 1,180 mm

Chamber system: Standard chamber system

Connection inlet/outlet sockets: with spigot for connection for wastewater pipes and shaped parts in accordance with DIN EN 1401-1, DIN 19534, DIN EN 12666-1, DIN 19537-3 and DIN EN 1852-1

Coverage features:

Type of cover: Temporary protective cover

Cover material: Polymer

Vertical drop between inlet and outlet: 9 mm