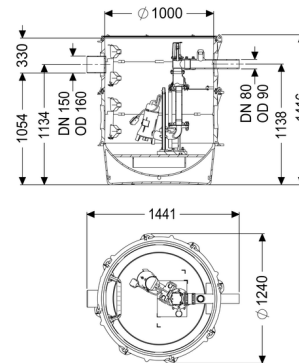


## Pumping station Aquapump XL Mono, STZ 1400-S1



### Article information

Item no.: 8743032  
 GTIN: 4026092078976  
 Price group: 60

### Advantages

- Maximum safety
- Flexible installation
- Also handles large quantities of faecal-free wastewater

### Description

The pumping station for faecal-free wastewater is equipped with a submersible pump and a backflow preventer. The collection tank made of permanently resistant polymer (PE) has an open pump tank with universal connection options. Quick-release closures enable the integrated components to be removed easily.

The KESSEL modular system provides different engineering chamber options as accessories for the further layout.

Type of wastewater: wastewater without sewage

### Version:

Type of system:	Single station
Installation:	Wet installation
Shut-off valve:	Shut-off valve made of polymer
Pump control:	Float switch
Backflow preventer:	integrated
Access steps:	yes
Passage seal for ventilation pipe (DN):	100 mm
Passage seal for conduit pipe (DN):	100 mm
Delivery state:	Pre-mounted for final assembly on site (pumps and sensor system must be fitted on site and control unit must be connected)

**General characteristics:**

Colour:	black
Standard:	EN 12050-2

**Dimensions:**

Length:	1,300 mm
Width:	1,300 mm
Height:	1,416 mm

**Tank:**

Number of inlets:	1 ST
Inlet nominal size (DN):	150
Inlet nominal size (OD):	160 mm
Pumping volume:	210 l
Pressure pipe connection:	horizontal
Pressure pipe connection (DN):	80 mm
Pressure pipe connection (OD):	90 mm
Groundwater resistant from lower edge of base section:	3,000 mm
Clear width of tank (LW):	1,000 mm

**Pumping device:**

Pump:	GTF 1400
Number of pumps:	1
Max. pumping capacity:	31 m <sup>3</sup> /h
Max. pumping height:	10.5 m
Operating voltage:	230 V
Mains frequency:	50 Hz
Operating mode:	S1
Power P1:	1.5 kW
Power P2:	1.1 kW
Speed:	2,900 U/min
Type of fuse required (electrical protection):	C 16 A
Max. temperature (permanent) of conveyed material:	40 °C
Connection type:	Schuko (earthed contact) 2-pin
Weight:	22 kg
Impeller type:	Multi-vane impeller
Length of mains cable for pump:	10 m
Rated current:	6.5 A
Protection class (pump):	IP 68 (20m)
Protection class:	I

Type of pump connection cable:	H07RN-F 3G 1.5 mm <sup>2</sup>
Temperature monitoring:	integrated
Cos phi - power factor:	0.99
Insulation class:	H

**Control:**

Motor protection switch:	yes
Level measurement instrument:	Float switch