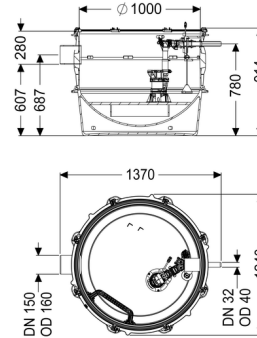
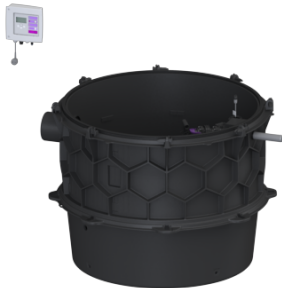


Pumping station Aquapump XL Mono, GTF 600-S1, Subm. pressure switch



Article information

Item no.: 8743005
 GTIN: 4026092075623
 Price group: 60

Advantages

- Maximum safety
- Flexible installation
- Also handles large quantities of faecal-free wastewater

Description

The pumping station for faecal-free wastewater is equipped with a submersible pump and a backflow preventer. The collection tank made of permanently resistant polymer (PE) has an open pump tank with universal connection options. Quick-release closures enable the integrated components to be removed easily.

The station is controlled by a user-friendly control unit, which is optionally integrated in the building management system via a potential-free contact. Alternatively, alarm and collective fault messages can be output via a GSM interface.

The KESSEL modular system provides different engineering chamber options as accessories for the further layout.

Stainless steel pump removal chains available as accessory for each installation depth - Article number:

680528 = Length 2 m
 680529 = Length 3 m
 680530 = Length 4 m
 680531 = Length 5 m

Type of wastewater:
 Installation situation:

wastewater without sewage
 underground installation, floor slab installation

Version:

| | |
|-----------------------------------------|----------------------------------------------------------------------------------------------------------------------------|
| Type of system: | Single station |
| Installation: | Wet installation |
| Shut-off valve: | without shut-off valve |
| Pump control: | Control unit |
| Backflow preventer: | integrated |
| Access steps: | yes |
| Note on installation depth: | in combination with a chamber module |
| Passage seal for ventilation pipe (DN): | 100 mm |
| Passage seal for conduit pipe (DN): | 100 mm |
| Delivery state: | Pre-mounted for final assembly on site (pumps and sensor system must be fitted on site and control unit must be connected) |

General characteristics:

| | |
|-----------|------------|
| Colour: | black |
| Standard: | EN 12050-2 |

Dimensions:

| | |
|---------|----------|
| Length: | 1,330 mm |
| Width: | 1,240 mm |
| Height: | 914 mm |

Tank:

| | |
|--------------------------------------------------------|------------|
| Number of inlets: | 1 ST |
| Inlet nominal size (DN): | 150 |
| Inlet nominal size (OD): | 160 mm |
| Inlet max. scoring (DN): | 150 mm |
| Distance pipe bottom inlet to tank bottom: | 607 mm |
| Distance from centre of outlet pipe to tank bottom: | 780 mm |
| Distance from centre of inlet pipe to tank bottom: | 687 mm |
| Pumping volume: | 90 l |
| Pressure pipe connection: | horizontal |
| Pressure pipe connection (DN): | 32 mm |
| Pressure pipe connection (OD): | 40 mm |
| Groundwater resistant from lower edge of base section: | 3,000 mm |
| Clear width of tank (LW): | 1,000 mm |

Pumping device:

| | |
|----------------------------------------------------|--------------------------------|
| Pump: | GTF 600 |
| Number of pumps: | 1 |
| Max. pumping capacity: | 12 m ³ /h |
| Max. pumping height: | 8 m |
| Operating voltage: | 230 V |
| Mains frequency: | 50 Hz |
| Operating mode: | S1 |
| Power P1: | 0.6 kW |
| Power P2: | 0.36 kW |
| Speed: | 2,800 U/min |
| Type of fuse required (electrical protection): | C 16 A |
| Max. temperature (permanent) of conveyed material: | 40 °C |
| Connection type: | coded plug |
| Weight: | 6 kg |
| Impeller type: | Multi-vane impeller |
| Length of mains cable for pump: | 10 m |
| Rated current: | 2.7 A |
| Protection class (pump): | IP 68 (3m) |
| Protection class: | I |
| Type of pump connection cable: | H07RN-F 3G 1.0 mm ² |
| Temperature monitoring: | integrated |
| Cos phi - power factor: | 0.91 |
| Insulation class: | F |

Control:

| | |
|------------------------------------------------|-----------------------------|
| Control unit: | Comfort |
| Operating voltage: | 230 V |
| Mains frequency: | 50 Hz |
| Self-diagnosis system (SDS): | yes |
| Battery buffering: | yes |
| Multi-line display: | yes |
| Log book function: | yes |
| USB interface: | yes |
| GSM interface: | yes |
| Potential-free contact: | optional |
| Type of fuse required (electrical protection): | C 16 A |
| Protection class control unit: | IP 54 |
| Length of mains cable for control unit: | 1.4 m |
| Type of level measurement: | pneumatic |
| Level measurement instrument: | Submersible pressure switch |
| Alarm sensor: | optical probe |