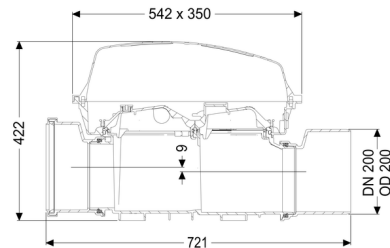
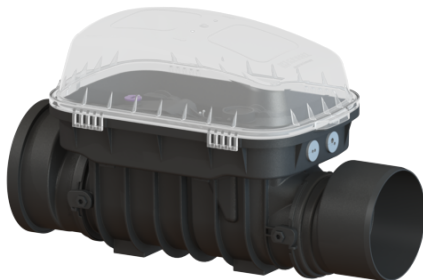


## Controlfix clean out DN 200, exposed



### Article information

Item no.: 80200  
 GTIN: 4026092046623  
 Price group: 30

### Advantages

- Simple conversion to Staufix SWA
- Staufix FKA or Pumpfix F
- Fast
- toolless access for cleaning
- Available as a complete set or module set

### Description

The Premium clean out for faecal and faecal-free wastewater makes easy access to wastewater pipes possible for inspection and maintenance work.

Thanks to the modular KESSEL system, existing systems can easily be converted to a Staufix SWA Premium backwater valve, Staufix FKA or Pumpfix F backwater pumping station.

Type of wastewater:	wastewater with and without sewage
Installation situation:	exposed drainage pipe
Delivery state:	installation-ready

### General characteristics:

Nominal size (DN):	200
Outer diameter (OD):	200
Note on nominal size:	Hydraulics correspond to DN 150
Colour:	black

### Dimensions:

Length:	486 mm
Width:	350 mm

Height: 422 mm

**Drain body:**

Socket version: including spigot and socket

**Coverage features:**

Type of cover: Protective cover

Cover material: Polymer

Colour of cover: transparent

Length: 542 mm

Width: 350 mm

Height: 165 mm

Locking: Clip closure

Vertical drop between inlet and outlet: 9 mm