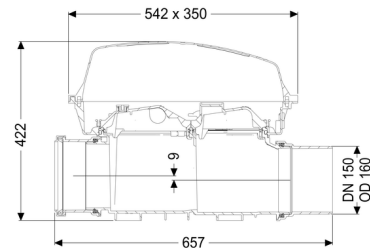
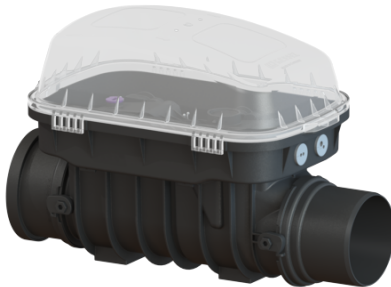


Controfix clean out DN 150, exposed



Article information

Item no.: 80150
 GTIN: 4026092002704
 Price group: 30

Advantages

- Simple conversion to Staufix SWA
- Staufix FKA or Pumpfix F
- Fast
- toolless access for cleaning
- Available as a complete set or module set

Description

The Premium clean out for faecal and faecal-free wastewater makes easy access to wastewater pipes possible for inspection and maintenance work.

Thanks to the modular KESSEL system, existing systems can easily be converted to a Staufix SWA Premium backwater valve, Staufix FKA or Pumpfix F backwater pumping station.

Type of wastewater:

wastewater with and without sewage

Installation situation:

exposed drainage pipe

Delivery state:

installation-ready

General characteristics:

Nominal size (DN):	150
Outer diameter (OD):	160
Colour:	black

Dimensions:

Length:	486 mm
Width:	350 mm
Height:	422 mm

Drain body:

Socket version: including spigot and socket

Coverage features:

Type of cover:	Protective cover
Cover material:	Polymer
Colour of cover:	transparent
Length:	542 mm
Width:	350 mm
Height:	165 mm
Locking:	Clip closure
Vertical drop between inlet and outlet:	9 mm