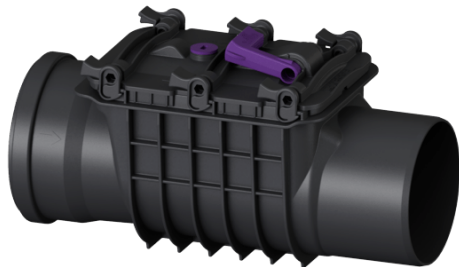


## Backwater valve Staufix Basic DN 150, Type 2, with emergency closure



### Article information

Item no.: 73150  
 GTIN: 4026092002445  
 Price group: 10

### Advantages

- Optional rat protection flap for additional safety
- Fast and toolless maintenance and cleaning
- Ideal for modernisation: can also be installed in existing pipes later

### Description

The backwater valve for wastewater without sewage is equipped with two mechanical flaps which close automatically in the event of backwater. One flap serves at the same time as an emergency closure to be closed by hand.

Type of wastewater: wastewater without sewage  
 Installation situation: exposed drainage pipe

### Version:

Stainless steel flap as rat protection:	no
Emergency closure:	yes
Delivery state:	installation-ready
Backwater protection:	Type 2
Number of mechanical backwater flaps:	2

### General characteristics:

Nominal size (DN):	150
Outer diameter (OD):	160
Standard:	EN 13564

### Dimensions:

Length:	450 mm
Width:	200 mm
Height:	280 mm

Vertical drop between inlet and outlet:  
Cover locking:

9 mm  
Quick-release closure