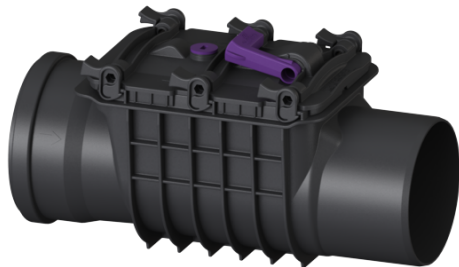


Backwater valve Staufix Basic DN 150, Type 1 R, with emergency closure



Article information

Item no.: 72150R
 GTIN: 4026092028384
 Price group: 10

Advantages

- Simple conversion possible using conversion kits
- Optional rat protection flap for additional safety
- Fast and toolless maintenance and cleaning

Description

The backwater valve for wastewater without sewage is equipped with one mechanical flap which closes automatically in the event of backwater and also serves as an emergency closure to be closed by hand.

Thanks to the modular KESSEL system, existing systems can easily be supplemented by a second backwater flap.

Type of wastewater:	wastewater without sewage
Installation situation:	exposed drainage pipe

Version:

Stainless steel flap as rat protection:	yes
Emergency closure:	yes
Delivery state:	installation-ready
Backwater protection:	Type 1
Number of mechanical backwater flaps:	1

General characteristics:

Nominal size (DN):	150
Outer diameter (OD):	160
Standard:	EN 13564

Dimensions:

Length: 450 mm
Width: 200 mm
Height: 280 mm

Vertical drop between inlet and outlet: 9 mm
Cover locking: Quick-release closure