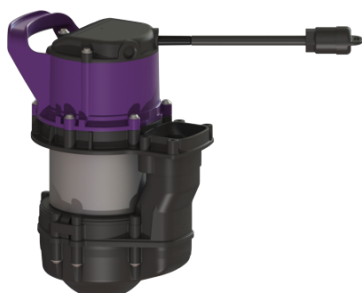


Replacement pump GTF 600 without float switch, 10 m



Article information

Item no.: 680964
 GTIN: 4026092095393
 Price group: 90

Description

Replacement pump for wastewater containing faecal matter.

Type of wastewater: wastewater without sewage

Pumping device:

Pump:	GTF 600
Max. pumping capacity:	12 m ³ /h
Max. pumping height:	8 m
Operating voltage:	230 V
Mains frequency:	50 Hz
Operating mode:	S1
Power P1:	0.65 kW
Power P2:	0.4 kW
Type of fuse required (electrical protection):	C 16 A
Max. temperature (permanent) of conveyed material:	40 °C
Connection type:	Schuko (earthed contact) 2-pin
Impeller type:	Multi-vane impeller
Length of mains cable for pump:	10 m
Rated current:	2.9 A
Protection class (pump):	IP 68 (3m)
Type of pump connection cable:	H07RN-F 3G 1.5 mm ²