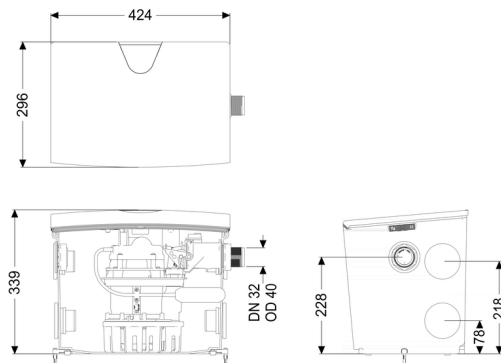
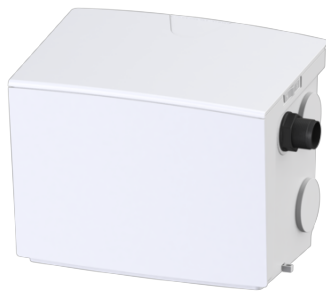


Lifting station Minilift S GTF 1000, free-standing set-up



Article information

Item no.: 28563
 GTIN: 4026092097014
 Price group: 20

Description

Type of wastewater:
 Installation situation:

wastewater without sewage
 free-standing set-up

Version:

Type of system:
 Pump control:
 Backflow preventer:
 Ventilation:

Single station
 Float switch
 integrated
 Activated carbon filter

Delivery state:

plug-in ready

General characteristics:

Colour:
 Standard:

white
 EN 12050-2

Dimensions:

Length: 425 mm
 Width: 300 mm
 Height: 340 mm

Tank:

Number of inlets:	5 ST
Inlet nominal size (DN):	40
Tank volume:	30 l
Pumping volume:	7 l
Pressure pipe connection:	horizontal
Pressure pipe connection (DN):	32 mm
Pressure pipe connection (OD):	40 mm
Free passage:	10 mm

Pumping device:

Pump:	GTF 1000
Number of pumps:	1
Max. pumping capacity:	14.5 m ³ /h
Max. pumping height:	10 m
Operating voltage:	230 V
Mains frequency:	50 Hz
Operating mode:	S3 - 50 %
Power P1:	1.27 kW
Power P2:	0.73 kW
Speed:	2,800 U/min
Type of fuse required (electrical protection):	C 16 A
Max. temperature (permanent) of conveyed material:	40 °C
Hot water resistance for a short time (2 min):	80 °C
Connection type:	Schuko (earthed contact) 2-pin
Weight:	10 kg
Impeller type:	Multi-vane impeller
Length of mains cable for pump:	5 m
Rated current:	5.6 A
Protection class (pump):	IP 68 (3m)
Protection class:	I
Type of pump connection cable:	H07RN-F 3G 1.0 mm ²
Temperature monitoring:	integrated

Control:

Type of level measurement:	mechanical
Level measurement instrument:	Float switch