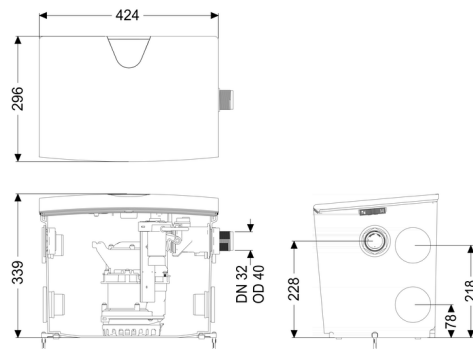
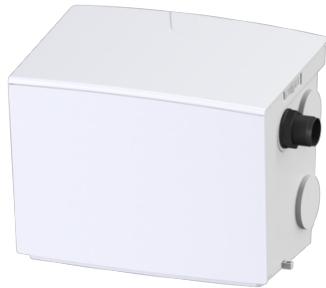


## Lifting station Minilift S GTF 500, free-standing set-up



### Article information

Item no.: 28562  
 GTIN: 4026092096994  
 Price group: 20

### Description

Type of wastewater: wastewater without sewage  
 Installation situation: free-standing set-up

### Version:

Type of system: Single station  
 Pump control: Float switch  
 Backflow preventer: integrated  
 Ventilation: Activated carbon filter  
 Delivery state: plug-in ready

### General characteristics:

Colour: white  
 Standard: EN 12050-2

### Dimensions:

Length: 425 mm  
 Width: 300 mm  
 Height: 340 mm

**Tank:**

Number of inlets:	5 ST
Inlet nominal size (DN):	40
Tank volume:	30 l
Pumping volume min.:	5 l
Pumping volume max.:	12 l
Pressure pipe connection:	horizontal
Pressure pipe connection (DN):	32 mm
Pressure pipe connection (OD):	40 mm
Free passage:	10 mm

**Pumping device:**

Pump:	GTF 500
Number of pumps:	1
Max. pumping capacity:	10 m <sup>3</sup> /h
Max. pumping height:	8 m
Operating voltage:	230 V
Mains frequency:	50 Hz
Operating mode:	S1
Power P1:	0.6 kW
Power P2:	0.36 kW
Speed:	2,800 U/min
Type of fuse required (electrical protection):	C 16 A
Max. temperature (permanent) of conveyed material:	40 °C
Hot water resistance for a short time (2 min):	80 °C
Connection type:	Schuko (earthed contact) 2-pin
Weight:	6 kg
Impeller type:	Multi-vane impeller
Length of mains cable for pump:	5 m
Rated current:	2.7 A
Protection class (pump):	IP 68 (3m)
Protection class:	I
Type of pump connection cable:	H07RN-F 3G 1.0 mm <sup>2</sup>
Temperature monitoring:	integrated

**Control:**

Type of level measurement:	mechanical
Level measurement instrument:	Float switch