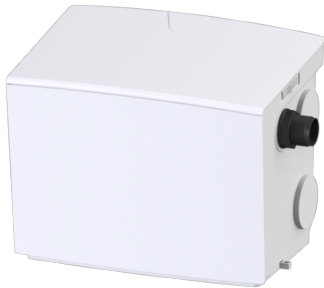


## Lifting station Minilift S KTP 300, resistant, free-standing set-up



### Article information

Item no.: 28561C  
GTIN: 4026092096987  
Price group: 20

### Description

Type of wastewater: wastewater without sewage  
Installation situation: free-standing set-up

### Version:

Type of system: Single station  
Pump control: Float switch  
Backflow preventer: integrated  
Resistant: Resistant to saline media, wastewater from water softening systems and wastewater containing condensate from heating systems  
Ventilation: Activated carbon filter  
Delivery state: plug-in ready

### General characteristics:

Colour: white  
Standard: EN 12050-2

### Dimensions:

Length: 425 mm  
Width: 300 mm  
Height: 340 mm

### Tank:

Number of inlets: 5 ST

Inlet nominal size (DN):	40, 50
Tank volume:	30 l
Pumping volume min.:	5 l
Pumping volume max.:	12 l
Pressure pipe connection:	horizontal
Pressure pipe connection (DN):	32 mm
Pressure pipe connection (OD):	40 mm
Free passage:	10 mm

#### **Pumping device:**

Number of pumps:	1
Max. pumping capacity:	8 m <sup>3</sup> /h
Max. pumping height:	6 m
Operating voltage:	230 V
Mains frequency:	50 Hz
Operating mode:	S1
Power P1:	0.34 kW
Power P2:	0.21 kW
Speed:	2,800 U/min
Type of fuse required (electrical protection):	C 16 A
Max. temperature (permanent) of conveyed material:	40 °C
Hot water resistance for a short time (2 min):	80 °C
Connection type:	Schuko (earthed contact) 2-pin
Weight:	4.5 kg
Impeller type:	Multi-vane impeller
Length of mains cable for pump:	5 m
Rated current:	1.6 A
Protection class (pump):	IP 68 (3m)
Protection class:	I
Type of pump connection cable:	H07RN-F 3G 1.0 mm <sup>2</sup>
Temperature monitoring:	integrated

#### **Control:**

Type of level measurement:	mechanical
Level measurement instrument:	Float switch