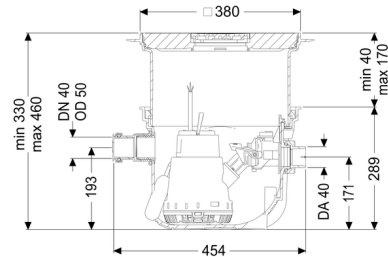


Lifting station Minilift S KTP 300-S1, Floor slab, black



Article information

Item no.: 280570S
 GTIN: 4026092082553
 Price group: 20

Advantages

- Space-saving installation in the floor slab
- System ready to plug in
- Easy maintenance

Description

The ready to plug in small lifting station for faecal-free wastewater is suitable for wastewater drainage of individual sanitary appliances. The submersible pump with float switch can be removed easily with the help of one-handed closures. The collection tank made of polymer (PE) has an open pump tank and is resistant to aggressive wastewater. The system for installation in the floor slab is preassembled for final installation on site.

- with telescopic upper section for continuously adjustable height and level compensation and integrated floor drain
- including backflow preventer for the pressure pipe
- including DN 50 socket for inlet and cable conduit
- pump with multi-vane impeller for maximum operating reliability
- including float switch for level measurement

Type of wastewater:	wastewater without sewage
Installation situation:	floor slab installation

Version:

Type of system:	Single station
Pump control:	Float switch
Backflow preventer:	integrated

Delivery state:

Installation-ready (connection parts must be connected on site)

General characteristics:

Colour: grey
Standard: EN 12050-2

Dimensions:

Length: 460 mm
Width: 380 mm

Tank:

Inlet nominal size (DN): 50
Inlet nominal size (OD): 60 mm
Pumping volume: 7 l
Pressure pipe connection (DN): 32 mm
Pressure pipe connection (OD): 40 mm
Installation depth: 330 - 460 mm

Coverage features:

Type of cover: Cover plate with slotted cover
Cover material: Polymer
Colour of cover: black
Load class: K 3 (EN 1253-1)
Length: 366 mm
Width: 366 mm
Locking: Lock & Lift
Free passage: 10 mm

Pumping device:

Pump: KTP 300
Number of pumps: 1
Max. pumping capacity: 8 m³/h
Max. pumping height: 6 m
Operating voltage: 230 V
Mains frequency: 50 Hz
Operating mode: S1
Power P1: 0.34 kW
Power P2: 0.21 kW
Speed: 2,800 U/min

Type of fuse required (electrical protection):	C 16 A
Max. temperature (permanent) of conveyed material:	40 °C
Connection type:	Schuko (earthed contact) 2-pin
Impeller type:	Multi-vane impeller
Length of mains cable for pump:	5 m
Rated current:	1.6 A
Protection class (pump):	IP 68 (3m)
Type of pump connection cable:	H07RN-F 3G 1.0 mm ²
Temperature monitoring:	integrated