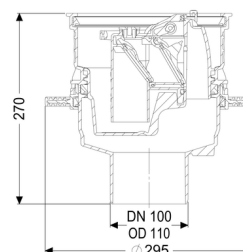
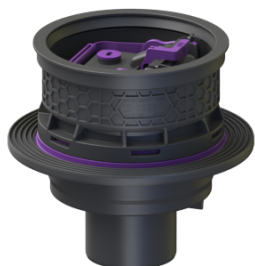


Universal Plus drain body vert., backwater valve, Waterpr.concr.



Article information

Item no.: 27650
 GTIN: 4026092096932
 Price group: 10

Description

In combination with an upper section, the polymer Universal Plus drain body is used for drainage of non-faecal wastewater and is equipped with a removable backwater valve with two backwater flaps, a one hand-lockable emergency closure and a sludge bucket. Including temporary protective cover.

The drain is pressure-waterproof up to 0.6 bar (MFPA Leipzig tested) and radon-tight (IAF Radioökologie GmbH tested).

Type of wastewater:	wastewater without sewage
Installation situation:	floor slab installation

Version:

Emergency closure:	yes
Sealing water height:	60 mm
Backwater protection:	Type 5
Number of mechanical backwater flaps:	2

General characteristics:

Nominal size (DN):	100
Colour:	black
Standard:	EN 1253, EN 13564

Dimensions:

Height:	270 mm
Cutout dimension, length:	310 mm
Cutout dimension, width:	310 mm
Diameter:	295 mm

Drain body:

Socket version:	vertical
Vertical adjustment:	vertically adjustable upper section

Coverage features:

Sludge bucket:	yes
----------------	-----