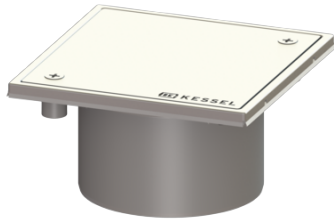


Cleanout Sys 100, ABS, Cover 304 SST, screwed, L15



Article information

Item no.: 27196G
GTIN: 4026092054963
Price group: 70

Description

The cleanout, made of polymer with grating and frame made of stainless steel, serves as an upper section for direct connection on pipes and is equipped with a closed, screwed cover plate.

Version:

System: 100

Dimensions:

Height: 93 mm

Coverage features:

Type of cover: closed cover plate
Cover material: 304 stainless steel
Colour of cover: silver
Load class: L 15 (EN 1253-1)
Height: 17 mm
Surface: Polished SST
Locking: screwed

Grating:

Rim length: 150 mm
Rim width: 150 mm
Rim material: 304 stainless steel

Shape of upper section: square

Upper section material:

ABS