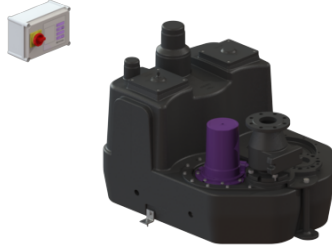


Lifting stati. Aqualift F XL 200l Mono, SPF 5500-S3



Article information

Item no.: 11072
GTIN: 4026092057391
Price group: 50

Advantages

- Different performance classes available
- Pressure sensor for reliable pneumatic level measurement
- Maximum operating reliability due to intelligent control unit (Duo)

Description

The lifting station for faecal and faecal-free wastewater is equipped with a submersible pump and a backflow preventer. The collection tank made of permanently resistant polymer (PE) offers universal connection options and has a screwed access cover.

The station is controlled by a user-friendly control unit, which can be optionally integrated in the building management system via a potential-free contact or alarm and collective fault messages can be output via a GSM interface (Comfort control unit).

Type of wastewater: wastewater with sewage
Installation situation: free-standing set-up

Version:

Type of system: Single station

General characteristics:

Colour: black
Standard: EN 12050-1

Tank:

Tank volume: 200 l
Pressure pipe connection: vertical

Pumping device:

Pump:	SPF 5500
Number of pumps:	1
Operating mode:	S3 - 30 %
Impeller type:	Multi-vane impeller
Length of mains cable for pump:	5 m

Control:

Control unit:	Comfort
Operating voltage:	400 V
Mains frequency:	50 Hz
Type of level measurement:	pneumatic
Level measurement instrument:	Immersion pipe